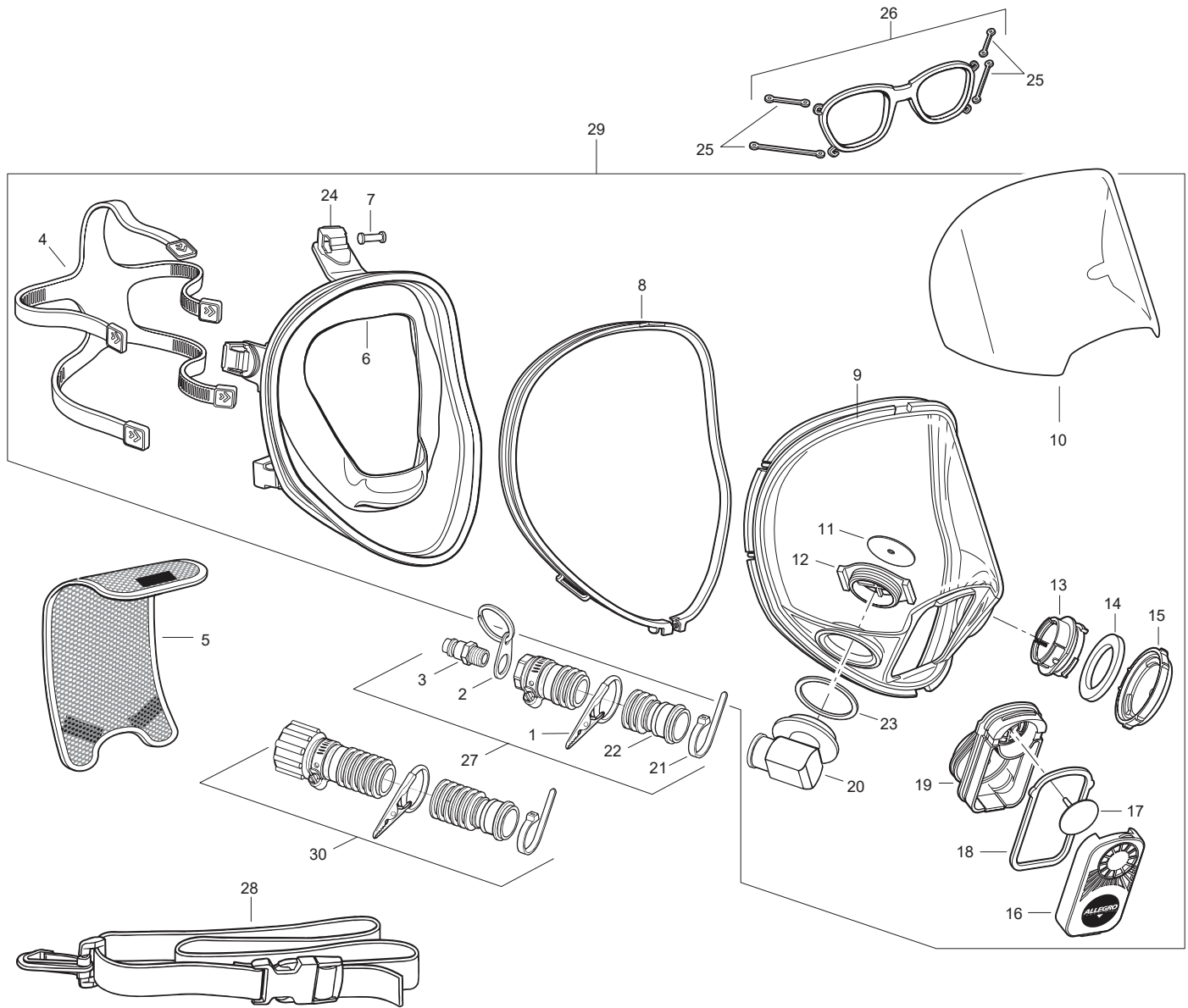




PRODUCT: FULL MASK SUPPLIED AIR RESPIRATOR

**PART NUMBER: 9901 (LOW PRESSURE)
9902 (HIGH PRESSURE)**



KEY	PART #	DESCRIPTION	KEY	PART #	DESCRIPTION	KEY	PART #	DESCRIPTION
	9901	Full Mask SAR (LP)	11	9901-03B	Inhalation Valve	23	9901-05	Elbow Adapter Gasket
	9902	Full Mask SAR (HP)	12	9901-03A	Elbow Adapter Retainer	24	9901-14	Suspension Buckle (5/Pkg.)
1	9900-09	Alligator Clip Assembly	13	9901-11A	Bayonet Connector	25	9901-06B	Support Bands
2	9900-15	Key Ring & Metal Tab Assembly	14	9901-11B	Bayonet Connector Gasket	26	9901-06	Spectacle Kit
3	9700-73B	Plug (OBAC) (LP)	15	9901-11C	Bayonet Connector Cover	27	9920-01A	Breathing Tube Assembly (LP)
4	RP164	5 Point Head Band Suspension	16	9901-08	Exhalation Valve Cover	28	9900-02	Waist Belt w/ Clip
5	9901-02	Hairnet	17	9901-07	Exhalation Valve	29	9901-10	Full Face Mask Skirt Assembly
6	9901-13	Full Face Mask Skirt	18	9901-07A	Exhalation Valve Gasket	30	9902-01	Breathing Tube Assembly (HP)
7	9901-12	Head Band Suspension Pin (5/Pkg.)	19	9901-07B	Exhalation Valve Housing		9901-20	Fit Test Kit - QLFT (Not Shown)
8	9901-09R	Lens Retainer (Includes Screw & Nut)	20	9901-04	Full Face Elbow Adapter		9901-22	Fit Test Kit - QNFT (Not Shown)
9	9901-09L	Replacement Lens	21	9900-01N	Plastic Tie Wrap		9920-01	Breathing Tube Assy. w/ Waist Belt (Includes #27 & #28 LP Only)
10	9901-25	Lens Peel-Offs (25/Pkg.)	22	9900-73B	Breathing Tube			